

# Oki Data Print Drivers & Citrix Presentation Server 4.0 Compatibility Report

10/16/2007

This document presents results from compatibility testing between Oki Data print drivers and Citrix Presentation Server 4.0. All testing was performed with English versions of Presentation Server 4.0 and English versions of Microsoft operating systems and Oki Data print drivers.

## 1. Evaluation Environment

Server and Client OS used in this evaluation:

|                     |   |
|---------------------|---|
| Windows 2003 Server | Citrix Presentation Server 4.0<br>+ HotFix applied ( PSE400W2K3R01 2006/01/16 version ) |
| Windows XP client   | ICA9.00.32649 WinXP   |

## Tested Devices:

| Model     | Firmware  | Driver  | Interface                               |
|-----------|---|---|---|
| C5550 MFP | CU: D2.12<br>PU F10.00.03<br>System: 1.13<br>Scanner: 1.10<br>WebPage: 1.08 | PostScript: Version 1.4.6<br>PCL: Version 2.0.5 | OKI LPR<br>MS-TCP/IP<br>USB             |
| B6500     | CU: 2.15 PU: 0.40.0<br>NIC: Ver1.2<br>RAM: 128MB                            | PS, PCL, XL<br>Ver1.5.10                        | OKI LPR<br>MS-TCP/IP<br>USB<br>Parallel |
| C8600     | CU: G1.06 PU:<br>D0.00.32<br>NIC: 06.05/W6.02<br>RAM: 128MB                 | Hiper-C: v2.1.7                                 | OKI LPR<br>MS-TCP/IP<br>USB             |
| C8800     | CU: E1.06<br>PU: 00.00.33<br>NIC: 06.51/W6.51<br>RAM: 256MB                 | PS: v3.1.0.0<br>PCL: v3.0.2-2                   | OKI LPR<br>MS-TCP/IP<br>USB<br>Parallel |
| C3530 MFP | CU: A3.02<br>PU: 10.00.00<br>NIC: 01.08/D1.09<br>RAM: 128MB                 | Hiper-C: v2.1.2                                 | OKI LPR<br>MS-TCP/IP<br>USB             |

| Model        | Firmware  | Driver                      | Interface                               |
|--------------|---|-----------------------------|---|
| B2400, B2200 | CU: L1.03<br>PU: 00.00.70<br>NIC: P5.01/D5.01<br>RAM: 16MB  | PCL: v1.0.1                 | OKI LPR<br>MS-TCP/IP<br>USB<br>Parallel |
| C5850        | CU: M1.02<br>PU: 00.00.12<br>NIC: 08.01/W8.01<br>RAM: 64MB  | Hiper-C: v1.0.1             | OKI LPR<br>MS-TCP/IP<br>USB             |
| C6150        | CU: N0.51<br>PU: 00.00.07<br>NIC: b0.20/00.06<br>RAM: 256MB | PS: v1.0.0.0<br>PCL: v1.0.1 | OKI LPR<br>MS-TCP/IP<br>USB             |

## 2. Overall Evaluation Results

Same results observed with previous Presentation Server 4.0 testing. No problems were encountered.

No server OS (Win 2000, 2003) environment dependent differences observed, and no problems were encountered

### 2.1 GUI functional test

Network printers => OK  
Client printers => OK

### 2.2 Multi-user print test

Logged in from three PCs - Verified that the printer had printed all user requests without problem.

#### 2.2.3 Load test

All three users opened large-load TP and printed simultaneously. => OK

In some cases, the server's CPU load rate reaches 100% momentarily. High CPU load viewed from clients as well, (response slows down) but does not affect printing.

## 2.3 Saving printer settings

Inherited Properties settings when connecting for the first time

- Client printer: (Auto Create Printer)
- Device options are not inherited.
- Other settings are partially inherited. (Paper size, Copies, Resolution)
- Network printer: (printer directly connected with the server)
- Device options and all other print settings are inherited.

Previous printer settings are retained when reconnected:

- Printer connected directly to Client - settings are retained.
- Printer connected to the network – settings are retained.

## 2.4 Universal printer driver (HP CLJ4500) operation verification

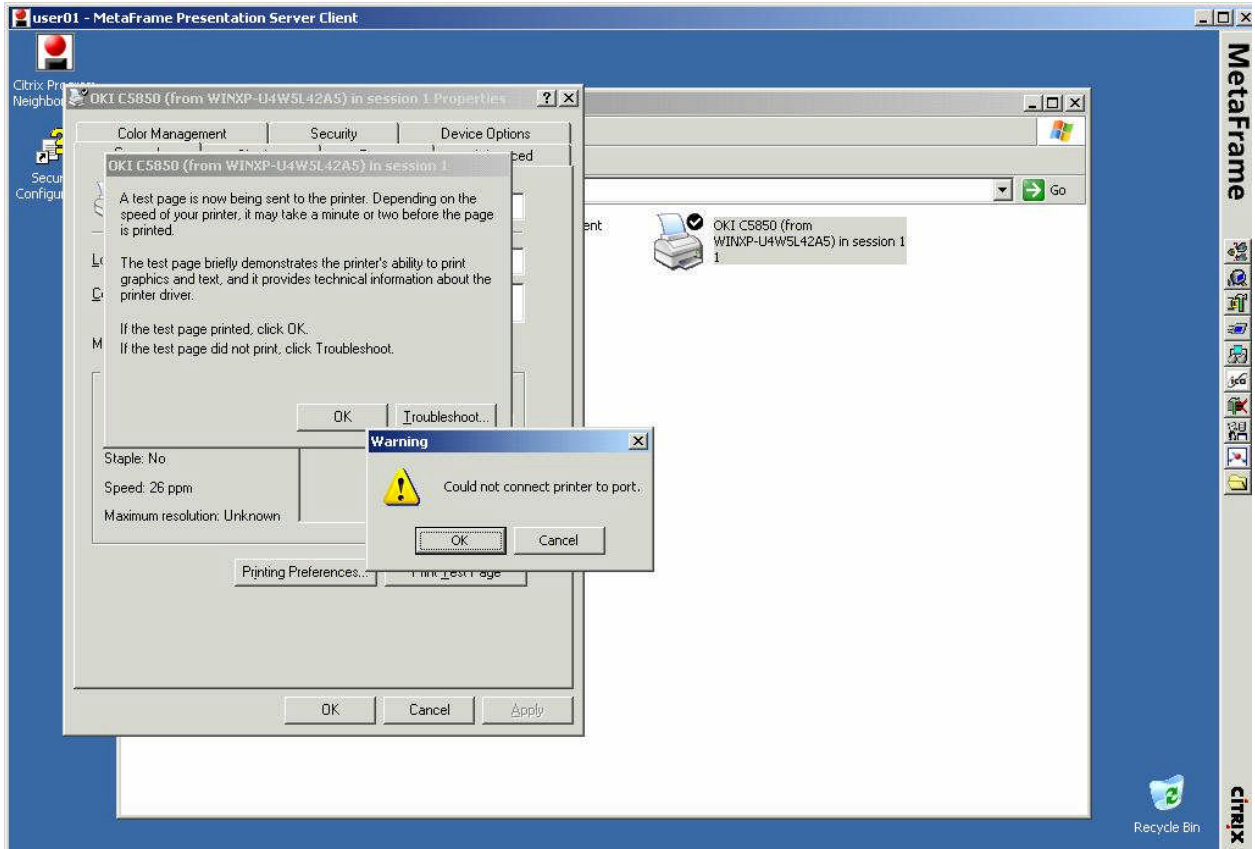
Verified that with each driver, universal printer driver (UPD) is automatically created correctly.

Printing verification: Confirmed that color printers could print in color. Verified that printing text and images did not result in any problem.

Note: There is a tendency for print data to increase when going through the UPD (raster conversion), thus there is a tendency for longer print times when using the UPD versus native driver

## 2.5 Precautions when using GDI (Windows printers) such as the C8600, C3530MFP, C5850

Connection was not successful when attempting to connect the C8600, C3530MFP, C5850 to a local printer port (LPR or USB for example), A warning is displayed immediately after the Print button is clicked. See sample screenshot below. Therefore, GDI driver devices cannot be used when directly connected to a workstation.



When printer is connected as a network printer, there is no problem.

## 2.6 Precautions when using B2200 Status Monitor:

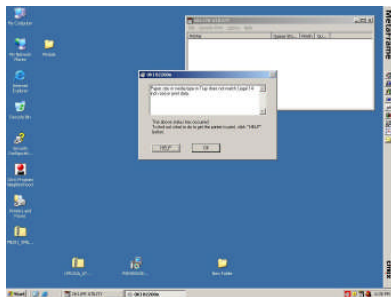
### Starting the Status Monitor

Normally, when printing is executed the B2200 Status Monitor's icon is displayed in the task tray and the Status Monitor starts. However, in Presentation Server, you need to start it manually when logging in.

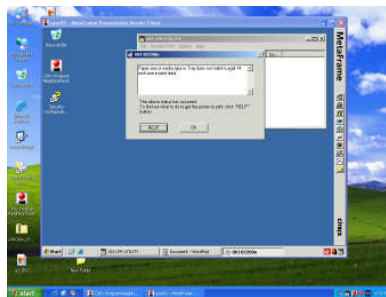
#### 2.6.2 PopUp Display

When printing with network connection, status pops up and displayed on both Server/Client screens if an alarm occurs on the printer side (paper size error, etc).

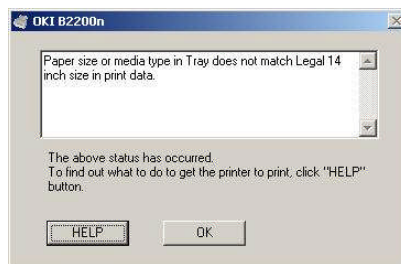
Server screen



Client screen



Enlarged popup display



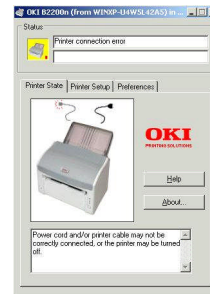
### 2.6.3 Selecting Client Printer

When Status Monitor is started in Presentation Server, SelectPrinter dialog is displayed and you are prompted to select a printer. But if you select a client printer, Printer connection error occurs, and you cannot use it.

SelectPrinter dialog



Printer connection error



## 3. Restrictions

1. The C8600, C3530MFP and C5850 can be connected directly to a network, directly to the Metaframe Presentation Server, or connected to the print server and shared on the Windows network. But please be advised that these 3 printers cannot be used as a client printer connected directly to a workstation via USB or parallel connection.

### 2. Auto Creation a client printer

At the time of auto creation, all client printer settings are not inherited. You will need to set items such as options, after auto creation.

The following items of the client settings are inherited in auto creation:

- Paper size (excluding user defined size and custom size)
- Resolution or print quality
- Print orientation (portrait and landscape)
- Copies
- Scale

The printer settings that were auto created are restored when printer is reconnected.

Note: In MetaFrame XP FeatureRelease2 and later, if the item "Update printer settings at log on" is ON (under Properties of printer management of Citrix management console), the above items are updated according to the client side settings. Other items retain the state of the previous login.

### 3. C5550MFP, C8800, C6150 PS driver

When printing from a client, you cannot use “Enter Job Name at printing” in the Proof / Secure Printing settings. A dialog box to enter the job name is not displayed on the client window, but displayed on the server console.

(Work-around)

Uncheck “Enter Job Name at printing” before using the printer.