

**CX2033 MFP**

**OKI**<sup>®</sup>  
PRINTING SOLUTIONS



**Outstanding HD Color in a fast,  
flexible, affordable workgroup MFP**





## CX2033 MFP: the best functionality and performance in one convenient HD Color multifunction product for small to medium workgroups

### CX2033 MFP Highlights:

- Print, copy, scan and fax for increased productivity
- High Definition Color printing technology for outstanding print and copy quality
- Print and copy speeds of up to 20 ppm in color and 32 ppm in black & white<sup>1</sup>
- Up to 1200 x 600 dpi print resolution
- Compact design to fit your environment
- Scan to PC, network, e-mail or FTP site
- Multi-tasking enables scanning or faxing while documents are printing
- Dual Access fax functionality standard
- Color Access Policy Manager lets you control printing costs by creating rules that define when color printing is allowed
- Embedded LDAP identifies e-mail users by actual name, not just by device name
- Full-featured analog fax; 180-page memory<sup>2</sup>
- Enhanced 802.1x security features<sup>3</sup>
- 50-sheet auto document feeder (ADF)
- 400-sheet standard paper capacity, expandable to 930 sheets with optional 2nd tray
- Banner printing capability on sheets up to 4 feet in length
- Optional duplex (2-sided) printing and 40 GB Hard Disk Drive
- Separate toner cartridges and image drums for greater cost efficiency

The CX2033 MFP from OKI Printing Solutions is a truly integrated color-and-mono device that can print, copy, scan and fax. It will satisfy the high-volume demands of a busy office environment, bringing greater productivity and cost-savings to your business.

The CX2033 MFP is designed to increase your pace and improve your image. It's perfect for small to medium workgroups, delivering color or black & white documents quickly and efficiently, along with 4-in-1 multifunctionality that provides real value for your investment.

**More functionality means more for business** – With the CX2033 MFP's superior document management software, big tasks are handled with ease. Analog fax and a wide range of easy-to-use "scan-to" features will streamline processes. Multi-tasking gets more done in less time: scan, copy, or send a fax while printing. Exceptional print and copy performance enhances productivity—with no compromise in print quality and without the need for a steep learning curve. All at a highly competitive price.

**High-quality documents for a better impression** – High Definition (HD) Color printing technology and 1200 x 600 dpi resolution improve detail, color depth and finish, so the CX2033 MFP delivers stunning output on ordinary office paper for

truly professional-looking business documents at speeds of up to 20 ppm in color and 32 ppm in black & white<sup>1</sup>. It prints banner sheets up to 4-feet in length, and Auto Color Balance provides consistent results on all media throughout the life of the printer/copier.

**Manage the network, manage the costs** – Included within the CX2033 MFP are powerful features that help you to keep costs down, productivity up, and security high. The Network Set-up Tool allows easy installation across your network. PrintSuperVision enables administrators to remotely monitor all printers. Job Accounting software makes it simple to manage color usage and costs, while enhanced 802.1x security meets the requirements of most IT professionals.<sup>3</sup>

**Simple to install—even easier to operate** – With its compact, ergonomic design the CX2033 MFP fits into the smallest office space. It's network-ready and simple to set up, and the user-friendly operator panel speeds every function.

**Built-in dependability keeps your work flowing** – As with all OKI Printing Solutions products, the CX2033 MFP is built to perform, day in, day out. Its straight paper path, high duty cycle, and high-capacity consumables help ensure that the device keeps running, minimizing the need for user intervention while maintaining workflow.

<sup>1</sup> Published performance results based on laboratory testing. Individual results may vary.

<sup>2</sup> Based on ITU-T test page #1.

<sup>3</sup> Requires optional hard disk drive.

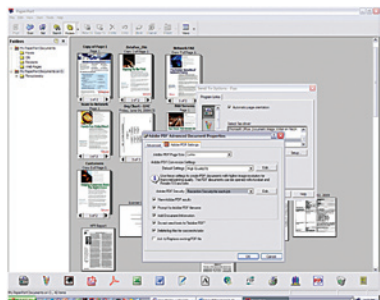
# The CX2033 MFP gives you control over document management, color output, security and cost efficiency.

## Document management made simple –

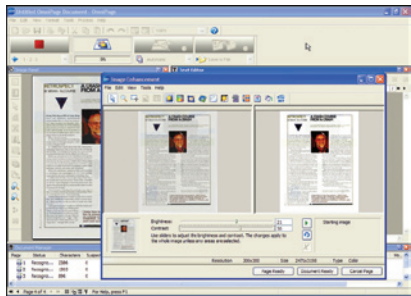
The CX2033 MFP comes with software that lets you move between scan-to-tasks with a single click, including Scan-to-Email, Scan-to-Folder, Scan-to-PC and Scan-and-Print.

Additional software easily turns piles of paper and photos into PDF and JPEG files—using the MFP’s scanner—and saves them to your computer for future use.

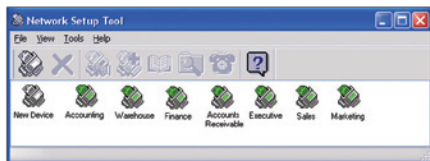
And the CX2033 MFP also has a precision optical character recognition (OCR) program to quickly turn office documents and forms into electronic files for editing, searching and sharing.



**PaperPort® from Nuance®** is a scanning and document management application that turns paper into digital content.



**Nuance's OmniPage®** software converts paper into editable electronic documents (via OCR), saving you time and increasing your productivity.



**Network Setup Tool** makes connecting your workgroup to the CX2033 MFP a breeze. Access can be granted with a click.

## CX2033 MFP from OKI Printing Solutions empower your creative versatility.

They also give you control—over the quality of your output, the degree of your security, and the extent of your printing costs. Here are some value-added examples:

### Unique HD (High Definition) Color technology

– For print quality that visibly enhances your documents, HD Color Printing technology delivers breathtaking results.



With HD Color technology



Without HD Color technology

It combines OKI Printing Solutions multilevel LED printheads and unique microfine toner with 1200 x 600 dpi resolution to provide greater depth of detail and color, and a high gloss finish, even on ordinary office paper.

### CX2033 MFPs equipped with the 40 GB hard disk drive option provide enhanced 802.1x security features that include:

#### Encrypted Secure Print<sup>3</sup>

- **256-Bit Encryption** – Enables secure passage of sensitive documents from PC to printer, with processing and output requiring PIN identification.
- **Job Timeout** – If not retrieved within a certain time (pre-set by the user), the document is sanitized (cleared) from the hard disk drive.

- **MAC Validation** – Message Authentication Code (MAC) is PC-encrypted into a digital document's printing data to prevent the file from being tampered with after it is sent to the printer. The printer reads the code and, if it detects any alterations to the file, issues a warning and cancels the job.

- **Secure Erase** – Ordinarily, simply deleting a document leaves traces of the contents on a printer's hard drive. This feature totally removes the document from the hard disk drive, erasing all vestiges of a sensitive file or, if desired, sanitizing the entire disk drive.

**Better printer management leads to a better bottom line. OKI Printing Solutions helps you with:**

- **Color Access Policy Manager** – Allows control over color printing access by converting unauthorized color print jobs to black & white or denying job altogether
- **PrintSuperVision** – Monitor all business printers within the firewall, regardless of printer make. Enables access to networked printer data for monitoring, reporting and managing networked printers in real-time. User interface is via standard web browsers and no additional software is required.
- **Job Accounting** – Enables tracking of color and monochrome printing costs, easy monitoring of printing activity, and greater control of printer usage. Generates reports for administrative, bill-back or cost-accounting purposes. Permissions are stored on the printer—not on the network—so the system is totally secure.

## CX2033 MFP AT A GLANCE

**50-sheet ADF:** the capacity of the automatic document feeder increases user productivity

**Easy-to-access functionality:** Alphanumeric keypad to enter e-mail addresses, FTP sites, fax numbers, codes and quantities with a touch; primary features are simple to locate and access

**High Definition Color:** printing technology ensures breath-taking output, even on plain office paper

**Single Pass Color™ technology:** straight-through paper path allows for superior flexibility in paper handling, including the ability to print banners up to 4-feet in length

**Optional storage cabinet:** added storage convenience and the perfect floor-standing height



**Flatbed scanner:** handles up to 8.5" x 11" documents on the glass and up to 8.5" x 14" documents via the ADF

**Backlit LCD display:** further simplifies navigation; enhances user productivity

**Compact, space-saving design:** the small, office space-saving footprint of the CX2033 MFP allows it to fit into most work environments

**300-sheet paper tray + 100-sheet multipurpose tray:** means fewer user interventions

**Optional 530-sheet 2nd paper tray:** expands capacity to 930 sheets

# CX2033 MFP

## Specifications

### Printer

- **Print Speed:** Up to 20 ppm color, 32 ppm black & white<sup>1</sup>
- **Time to First Page:** As fast as 11 seconds in color, 8 seconds in black & white<sup>1</sup>
- **Print Resolution:** 1200 x 600 dpi
- **Processor Speed:** 500 MHz
- **Duty Cycle:** 60,000 prints/copies per month
- **Connectivity:** USB v2.0 High Speed; 10/100 Base-T Ethernet (network), Dual RJ-11 (Fax)
- **Emulations:** PCL<sup>®</sup> 5c, PCL 6; PostScript<sup>®</sup> 3<sup>™</sup>
- **Operating Systems:** Windows<sup>®</sup> 2000, XP Home/XP Professional/XP Professional x64, Server 2003/Server 2003 x64, Server 2008/Server 2008 x64, Vista<sup>®</sup>/Vista x64; Mac<sup>®</sup> OS X PowerPC 10.4, Mac OS X Intel<sup>®</sup> 10.5.x
- **Fonts:** Scalable fonts – 87 PCL, 136 PostScript<sup>®</sup>; PCL Bitmap fonts – OCR-A/B, USPS<sup>®</sup> ZIP Barcode
- **Duplex (2-Sided) Printing:** Optional

### Copier

- **Copy Speed:** Up to 20 cpm color, 32 cpm black & white<sup>1</sup>
- **First Copy Out:** As fast as 23 seconds in color, 19 seconds in black & white<sup>1</sup>
- **Copy Resolution:** Up to 600 x 600 dpi
- **Copy Scaling:** 25% to 400% in 1% increments
- **Copy Scaling Presets:** 7 (25%, 50%, 78%, 98% [fit to page], 100%, 127%, 200%)
- **Copy Modes:** Speed, Text, Photo
- **Copy Quantity Selection:** 1-99
- **Additional Copy Functions:** ID Card Copy

### Scanner

- **Scan Type:** Color and black & white; flatbed
- **Scan Speed:** Up to 10 cpm color, 20 cpm black & white
- **Scan Resolution:** Up to 4800 dpi
- **Scan-to-PC:** Create electronic file from hard copy original with Nuance<sup>®</sup> PaperPort<sup>®</sup> 11.2 software
- **Address Book Management:** Embedded LDAP (Lightweight Directory Access Protocol)
- **Scan-to Functionality:** Scan to e-mail with embedded LDAP; to server (FTP sites); CIFS and TWAIN
- **Formats Supported:** PDF, JPEG, TIFF, M-TIFF
- **Driver Interface:** TWAIN, WIA
- **Mac Support:** Yes

### Fax

- **Fax Modem:** 33.6 Kbps Super G3
- **Transmission Speed:** 3 seconds/page<sup>2</sup>
- **Fax Resolution:** Up to 200 x 400 dpi
- **One-Touch Dial:** 10 locations
- **Broadcast Transmission:** Up to 100 locations, 20 groups
- **Fax Memory:** 180 pages<sup>2</sup> (3 MB)
- **Fax Functions:** Dual access, Manual transmission, Broadcasting, Delayed transmission, 200 Speed dial, Auto redial, Activity report (sending/receiving)

## Document Management

- **Utilities:** Nuance<sup>®</sup> PaperPort<sup>®</sup> 11.2, Nuance OmniPage<sup>®</sup> SE 4.2; OKI<sup>®</sup> LPR, Color Correct, Color Swatch; Network Setup Tool; Job Accounting Software; PrintSuperVision; Language Panel Downloader; Storage Device Manager; Profile Assistant

## System Memory

- **Standard/Max Imaging RAM:** 256 MB/768 MB
- **40 GB Hard Disk Drive:** Optional

## Storage

- **Optional Hard Disk Drive:** 40 GB

## Productivity Solutions

- **Web-based Printer Management:** PrintSuperVision and OkiLAN<sup>®</sup> Embedded Web Server
- **Access Control:** Scan, copy and fax with LDAP and local PIN authentication

## Security Solutions

- **Encrypted Secure Printing** (requires optional Hard Disk Drive): PIN/Password-enabled; AES 256-bit encryption; Secure Erase (DOD5220.22-M compliant); Message Authentication Code (MAC)
- **Network Security:** 802.1x Wired Authentication; SNMP v1, SSL3/TLS Encryption; Secure Print, Secure Erase and Data Encryption (last 3 require optional hard disk drive)

## Cost Containment Solutions

- **Job Accounting Software:** Track color/monochrome pages by individual or department; allows control over color printing access, and converts unauthorized color print jobs to black & white (Hard Disk Drive required for optimal functionality)
- **Color Access Policy Manager:** Allows control over color printing access by converting unauthorized color print jobs to black & white or denying job altogether

## Paper Handling

- **Scanner ADF:** Up to 50 letter/legal sheets (16 lb. – 28 lb.)
- **Paper Sizes (Min./Max.):** Main tray from 4.1" x 5.8" to 8.5" x 14"; Multi-Purpose tray from 3" x 5" cards to 8.5" x 48" banners
- **Standard Printer Input:** 400 sheets (300-sheet standard tray, 100-sheet Multi-Purpose tray)
- **Maximum Printer Input:** 930 sheets with opt. 2nd tray
- **Output Capacity:** 250 sheets face down, 100 sheets face up
- **Paper Types:** Letter, Legal, Banner, Executive, A4, A5, B5, A6; Envelopes – C5, DL, Monarch, COM 9, COM 10
- **Paper Weight:** Main tray 17 lb. – 32 lb. (64–120 gsm); Optional 2nd tray 17 lb. – 46 lb. (64–176 gsm); Manual feed 20 lb. bond – 110 lb. index (75–203 gsm)

## Environmental

- **Size (WxDxH):** 19.7" x 23.6" x 26.7" (50.0 cm x 60.0 cm x 68.0 cm)
- **Weight:** 81.6 lb. (37.0 kg)
- **Power Consumption:** Peak 1200W; Standby 110W; Normal 490W; Power Save <27W
- **Acoustic Noise:** Operating up to 59.5 dB(A); Standby 37 dB(A)

## Ordering Information

Description	Part Numbers	
CX2033 MFP 120V (Multilingual)	62433001	
<b>Options</b>		
Duplex (2-Sided Printing) Unit	43347501	
530-Sheet 2nd Paper Tray	43347608	
512 MB DIMM	70051701	
40 GB Hard Disk Drive	70043502	
Storage Cabinet	70052602	
<b>Supplies</b>		
<b>Toner Cartridges:</b>		
Cyan Toner Cartridge	6,000 pg. <sup>3</sup>	43865767
Magenta Toner Cartridge	6,000 pg. <sup>3</sup>	43865766
Yellow Toner Cartridge	6,000 pg. <sup>3</sup>	43865765
Black Toner Cartridge	8,000 pg. <sup>3</sup>	43865768
<b>Image Drum Kits:</b>		
Cyan Image Drum Kit	20,000 pg. <sup>4</sup>	56121103
Magenta Image Drum Kit	20,000 pg. <sup>4</sup>	56121102
Yellow Image Drum Kit	20,000 pg. <sup>4</sup>	56121101
Black Image Drum Kit	20,000 pg. <sup>4</sup>	56121104
<b>Print Media</b>		
		<b>Sheets Per Box</b>
Bright White Proofing Sheets:		
8.5" x 11" (32 lb.)	500	52206101
SynFlex <sup>™</sup> Paper (8.5" x 11" – Waterproof and Tear-resistant)		
	100	52205901
Ultra Gloss Paper (8 pt.):	100	52208901
	250	52208902
Banner Paper (8.5" x 35.4")	100	52206002

<sup>1</sup> Published performance results based on laboratory testing. Individual results may vary.

<sup>2</sup> Based on ITU-T Test Chart #1.

<sup>3</sup> Toner cartridges have an estimated life based on 5% coverage of letter-size pages. Unit ships with 2,000-page "starter" toner cartridges.

<sup>4</sup> Estimated life, based on 3 pages per job.

Specifications are subject to change without notice.

Featured products may not be available in all countries. Please contact your local office for regional availability.

©2009 OKI Data Americas, Inc. OKI Reg. T.M., M.D., OKI Electric Industry Co., Ltd. Single Pass Color T.M. and design Reg. T.M., High Definition Color logo T.M., OKI Data Corp. PostScript Reg. T.M., Adobe Systems, Inc. Windows, Vista Reg. T.M., Microsoft Corp. Nuance, PaperPort, OmniPage Reg. T.M., Nuance Communications, Inc. Intel Reg. T.M., Intel Corp. Mac Reg. T.M., Apple Inc. USB-IF T.M., Universal Serial Bus Implementers Forum, Inc. ENERGY STAR Reg. T.M., U.S. EPA.



## OKI DATA AMERICAS, INC.

**USA**  
2000 BISHOPS GATE BLVD.  
MOUNT LAUREL, NJ 08054-4620  
TEL: 800.OKI.DATA (800.654.3282)  
FAX: 856.222.5320

**CANADA**  
2735 MATHESON BLVD. EAST  
MISSISSAUGA, ONTARIO L4W 4M8  
TEL: 905.238.4250  
FAX: 905.238.4421

**LATIN AMÉRICA**  
2000 BISHOPS GATE BLVD.  
MOUNT LAUREL, NJ 08054-4620  
TEL: 856.231.0002  
FAX: 856.222.5071

**OKI DATA DE MÉXICO, S.A. DE C.V.**  
MARIANO ESCOBEDO, 748 8<sup>º</sup> PISO  
COL. NUEVA ANZURES C.P. 11590  
MÉXICO, D.F.  
TEL: 55.5263.8780  
FAX: 55.5250.3501

**OKI DATA DO BRASIL INFORMÁTICA LTDA.**  
AV. ALFREDO EGÍDIO DE SOUZA ARANHA, 100  
BLOCO C – 4<sup>º</sup> ANDAR  
04726-170 – SÃO PAULO – SP – BRASIL  
TEL: 11.3444.3500  
FAX: 11.3444.3502

WWW.OKIPRINTINGSOLUTIONS.COM