

Job Accounting Software

OKI[®]
PRINTING SOLUTIONS



Track network printer usage. Cut costs and save resources.

Accurate reporting of network color and mono printing usage for budget-conscious environments.

Track productivity and manage assets.

Job Accounting software is a standard feature that increases the value of your OKI Printing Solutions Digital Color printer by giving you an accurate picture of the printing activity of your business. It lets you track the print output of individual users or workgroups, and assign cost values to the documents they print—information that can then be used for internal usage reports and bill-back purposes.

This easy-to-use utility captures details such as color vs. mono (black & white), number of pages and page size, paper types and paper trays used, document name and total time spent on printing—whether by person or department.

A network or stand-alone solution.

The program can benefit multiple- or single-unit owners. With the Job Accounting utility, businesses large and small will find it easier to forecast their resources and bill for their productivity. Network administrators can restrict printer access by user or group. To help control costs, limitations can be set on the use of color vs. mono printing, quantity of printouts, and the length of time a printer can be in use.

And, since job control authentication is available only to the system manager, security is greatly enhanced.

Support for most popular operating systems.

The Job Accounting utility is at home with Windows[®] 2000, XP, NT[®] 4.0 and Mac[®] OS 8.6 to 10.x. The program is simple to set up, with a configuration wizard to move the process speedily along.

You can have Job Accounting software gather data at any time, 24 hours a day. It provides reports in a CSV format, making them easily exportable to familiar spreadsheet programs such as Microsoft[®] Excel.

Among the reports generated by the Job Accounting utility are: number of pages printed by specific device; color vs. mono pages; breakdown by page size; pages printed by user or department; cost per page; and job identification by name.

Job Accounting software. When accountability counts—towards cutting costs and saving resources—it's an effective addition to your demanding environment.

Highlights:

- Compatible with most OKI Printing Solution Digital Color printers¹
- Tracks color vs. mono (black & white) printouts, paper size, paper tray, paper type, and printer usage time
- Calculates corresponding costs for each printer based on paper size/type/tray, color output, mono output, duplex, stapling, and printer usage time
- Tracks pages printed by USB- or parallel-connected printers
- Tracks usage by job, user or group
- Enables cost controls by restricting individual color usage
- Printer-resident authentication protocols enhance system security
- Records document file names for added security
- Data available in CSV format for importing to popular spreadsheet programs
- Supports a variety of Windows[®] and Mac[®] clients
- Scalable support for network users—limited only to server capacity and print volume²

¹ Will work only with OKI branded Digital Color printers (C5400 Series, C7350/C7550 Series and C9300/C9500 Series; not backward compatible).

² Can also be configured as a stand-alone application (Windows only).

Job Accounting Software

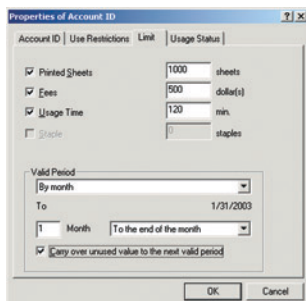
Among the many features and benefits of the Job Accounting utility:

- Easy configuration, setup, and integration of users and groups
- Enhanced security: authentication controls accessible only by system manager
- Separates black & white printing from color printing for easy tracking and billing
- Tracks number of fed sheets, printed sheets, media type and paper size

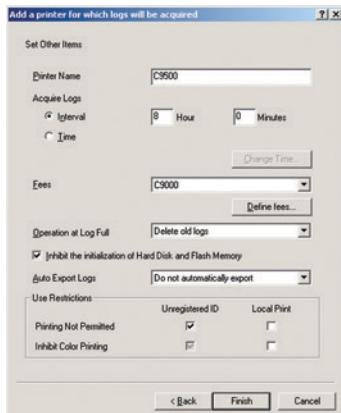
- Enables cost control by granting or denying color printer access to specific groups or individuals
- Allows user access to printers by time or priority levels
- Tracking is transparent to users
- CSV-formatted data is easily imported to popular spreadsheet programs

For more information on OKI Printing Solutions software products, Digital Color Printers and supplies, including OKIcare® Extended Service Programs: **1-800-OKI-DATA (800-654-3282)**.

Familiar graphical user interface makes Job Accounting software simple to use:

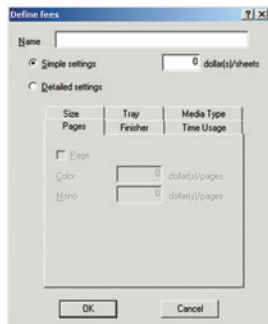
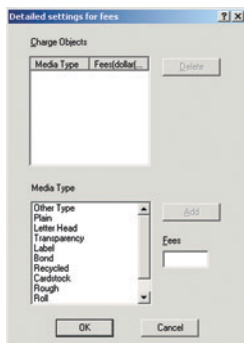


Manage user access. The Job Accounting utility lets you determine and manage the users and/or groups that have access—universal or restricted—to the printers in your office. Simply use your mouse to establish accounts and limitations.



Easy setup and control.

No matter how large your enterprise, the Job Accounting utility allows you to set up and easily configure multiple OKI Printing Solutions Digital Color printers. You can set them up in clusters, by location or printer type to facilitate your tracking and reporting structure.



Instant cost structure.

Assign cost values to the documents you print—based on page size, color vs. mono (black & white), type of media used, amount of time printing, etc.—as well as the finishing options you use. The information that the Job Accounting utility collects can then be applied to budgeting or bill-back purposes.

Job Accounting from OKI Specifications

Program
Exclusively for C5400 series, C7350/C7550 and C9300/C9500 OKI Printing Solutions Digital Color printers with Hard Disk Drive (not backward compatible)
Server-based or stand-alone
Support for PCL® and PostScript® emulations
Requires Hard Disk Drive for optimal performance
Operating Environments (Stand-alone)
Windows® 2000/XP
Windows NT® 4.0
Operating Environments (Server)
Windows 2000/XP Professional
Windows NT 4.0 Server
Client Support
Windows NT 4.0, Windows 2000/XP
Windows 98 / 95, Windows Me
Macintosh® (OS 8.6 to 10.x)
Client/Printer Management
Uses Network Log-in/ID Name
Mono/Color Restriction Support
Scalable User Support1
User Quota Control
Timed Quotas
Accounting/Reporting Features
Color/Mono Page Tracking/Costing
Paper Tracking/Costing
Exports to CSV Format
Local I/F Printer Support
Client/Department Charge-back
Installation
Configuration Wizard for Easy Installation

Specifications are subject to change without notice.

© 2005 Okidata Americas, Inc. OKI Reg. T.M., M.D. M.R., OKIcare Reg. T.M., Oki Electric Industry Co., Ltd. PostScript, Acrobat Reg. T.M., Adobe Systems Inc. Microsoft, Windows, Windows NT Reg. T.M., Microsoft Corp. PCL, Reg. T.M., Hewlett-Packard Co. Macintosh Reg. T.M., Apple Computer Inc.



OKI DATA AMERICAS, INC.

USA
2000 BISHOPS GATE BLVD.
MOUNT LAUREL, NJ 08054-4620
T 800 OKI.DATA (800.654.3282)
F 856 222 5320

CANADA
2735 MATHESON BLVD. EAST
MISSISSAUGA, ONTARIO L4W 4M8
T 905 238 4250
F 905 238 4421

LATIN AMERICA AND MEXICO
2000 BISHOPS GATE BLVD.
MOUNT LAUREL, NJ 08054-4620
T 856 231 0002
F 856 222 5071
WWW.OKIPRINTINGSOLUTIONS.COM

Okidata Network Solutions
for a Global Society