

# 11<sup>th</sup> Annual Awards

2006

**BERTL's  
BEST**



Best Executive Office Color MFP

## **ES1624n MFP from OKI Printing Solutions**

The 2006 BERTL Best Award for Executive Office Color MFP has been awarded to the ES1624n MFP from OKI Printing Solutions. This compact, low-cost, yet versatile 16 ppm color/24 ppm black and white printer/copier/scanner/fax delivers an impressive bang for the buck allowing the busy executive to handle a diverse range of document production and distribution tasks.

# 2006

Building on its strong history of quality printer products, OKI Printing Solutions has developed an impressive multi-function device with the ES1624n MFP from OKI Printing Solutions. The ES1624n is well-designed and includes an extensive standard feature set for a product in this segment.

Out of the box, the device provides print, copy, and scan functionality (network faxing is available via the optional Equisys ZetaFax), a 400MHz print processor, and 128MB RAM (upgradeable to 320MB). It is easily connected via the standard 10/100 BaseT Ethernet print server, parallel, or USB 2.0 ports. Also impressive for an MFP at this price are built-in PCL (5c and 6) and PostScript 3 emulation (usually a chargeable option).

The ES1624n MFP from OKI Printing Solutions comes standard with a 300-sheet paper drawer, 100-sheet multi-purpose tray, and 50-sheet letter size ADF. The main paper tray handles paper

sized up to 8.5" x 14" and weights up to 32 lb. bond, while the multi-purpose tray can handle up to 110 lb. index and banner size paper. Options include: an additional paper tray (bringing total paper supply up to 930 sheets), duplex capability, and a 20GB Hard Disk Drive.

While printing may be the most commonly-used feature, the ES1624n MFP from OKI Printing Solutions is equipped with strong device management utilities and software tools providing easy access to walk-up copying, scanning, and PC faxing. This functionality makes it an excellent choice for an executive office.

Included as standard are ScanSoft PaperPort, which provides basic document management capability, and the ScanSoft TextBridge OCR application for converting hard copy into editable electronic documents. These software applications enhance the device's scan to email and scan to file features.

**BERTL**

©2006 MCA Internet LLC, dba BERTL. 200 Craig Road, Manalapan, NJ 07726. All Rights Reserved. No copying, distributing, or storage of any kind is permitted. To obtain a reprint license, call (1) 732-761-2311. BERTL® is a registered trademark of MCA Internet, LLC. For information on BERTL reports, awards, and subscriptions, visit [www.BERTL.com](http://www.BERTL.com)

## Best Executive Office Color MFP | **ES1624n MFP** from OKI Printing Solutions

Documents can be scanned and converted to PDF, JPEG, TIFF, or multi-page TIFF (MTIFF) formats and emailed. The files also can be routed to a folder on the network, or over the Internet to a folder on a remote PC, or to a designated FTP site. Scan to email allows the user to include a subject line and send to a single or multiple recipients using the standard Light Directory Address Protocol (LDAP) address book feature.

The standard MFP Network Utility manages network-connected OKI Printing Solutions MFP devices, as well as non-OKI Printing Solutions devices, and includes tools for managing individual profiles, color adjustment, and LDAP management. A Network Extension creates a Status tab within both the PCL and PostScript drivers allowing users to monitor the status of a selected printer.

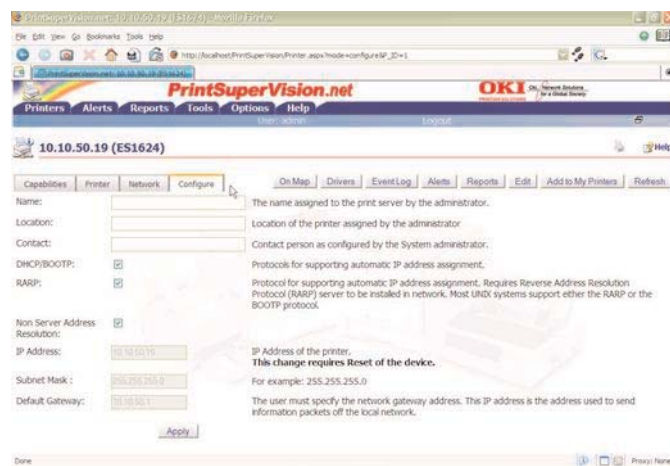
The PrintSuperVision Internet-based software enables administrators to access and distribute printer data and control printer functionality. Color Utilities feature Color Correct which helps adjust how RGB colors are printed and Color Swatch which helps the user match the color of printed output to a specific color needed or displayed in an application.

When the ES1624n MFP from OKI Printing Solutions is equipped with the optional 20GB hard drive, the Job Accounting software can be utilized to enable the tracking of color printing costs and also provides easy monitoring and control of printer usage.

Security on the ES1624n MFP from OKI Printing Solutions is handled through included utilities where an administrator can grant or restrict scanning or copying to individuals or groups. Individual and group PINs can be assigned to users by the administrator with associated privileges or restrictions. For example, a scan-to restriction can be preset so that some users will only be able (via their PIN) to scan to FTP but not to email, while others may have privileges for both or neither.

The Secure Print feature can be selected from within both the PCL and PostScript drivers enabling users to send documents to print and store them on the device's optional hard drive, protected with a PIN, until the user is ready to go to the machine and print the job.

The included Storage Device Manager (also for use with the optional hard drive) enables users to print secure documents directly from their PC desktop.



Through PrintSuperVision, administrators can configure a variety of parameters for each OKI Printing Solutions printer on the network, as well as specify a unique printer name, location, and contact.

For printing, users can choose between the standard PCL and PostScript drivers depending on needs. Both drivers include an interesting Proof-and-Print feature (requires the optional hard disk) that enables the user to send multiple copies of a document to print, but produce only the first copy so that the output can be checked for quality before printing the remaining quantity. Printing of the remaining copies can be performed through the device's control panel or from the user's desktop.

Permanent Print documents can be created for situations where the same document is often printed at different times or by different users. The job is stored permanently on the optional hard drive and can be re-printed as needed via the user's desktop or the unit's control panel.

Another plus for the ES1624n MFP from OKI Printing Solutions is its compact, uniquely-designed cartridges which enable independent replacement of toner and drums, instead of forcing users to replace costly drums as part of all-in-one cartridges.

With its standard, deeply functional software tools, industry-leading PaperPort and TextBridge OCR applications, good paper handling capabilities, and low price point, the ES1624n MFP from OKI Printing Solutions is hard to beat for making the busy executive's life run more smoothly.

## Spotlight on Oki Data Americas

---

Oki Data Americas, Inc. (Mount Laurel, NJ), a subsidiary of Oki Data Corporation of Japan, is a leading provider of color and monochrome digital printers, serial impact dot matrix printers, fax machines and multifunction products marketed under the OKI® Printing Solutions brand.

Oki Electric Industry Company, Ltd., parent company to Oki Data Corporation, is a world leader in information processing systems, telecommunications and electronics with \$6.4 billion in sales.

Oki Data was founded in 1972 as a joint venture between two Philadelphia entrepreneurs and their Japanese customer, Oki Electric, to develop and produce leading-edge information technology products.

OKI Printing Solutions-branded digital LED printers are powered by the company's advanced light-emitting diode (LED) digital print head technology introduced nearly two decades ago.

The company's first digital LED color printer to utilize Single Pass Color® Digital Technology was introduced in 1998 and is now in-market with its seventh-generation color printers. These printers are capable of full-color speeds up 36 pages per minute and have been recognized with more than 40 international awards for color excellence from the PC and IT press.

OKI Printing Solutions' fast color and monochrome printers for use in desktop and workgroup environments help today's businesses produce a wide variety of documents for internal text documents and business correspondence.

## BERTL's Best Office Awards

---

### Recognizing the Best in Digital Imaging Technology and Innovation

For 11 consecutive years, BERTL has recognized the best devices and software in the digital imaging marketplace with BERTL's Best awards. Winners are selected after rigorous analysis of the hundreds of digital imaging devices, software, and management utilities in the world-wide marketplace.

This year, the awards are presented in three segments.

<b>Office Awards</b>	<b>Spring, 2006</b>
<b>Software and Solutions Awards</b>	<b>Dates to be announced</b>
<b>Production Awards</b>	<b>Dates to be announced</b>

BERTL's Best Office awards honor digital imaging and document management solutions for business offices of all sizes and vertical sectors. Imaging solutions covered by these office awards include:

<b>Digital Duplicators</b>	<b>General Office Monochrome</b>
<b>Executive Office MFPs</b>	<b>Innovation Awards</b>
<b>General Office Color</b>	<b>Software and Utilities</b>

BERTL's analysts review current product lines and new product introductions to identify the select group of devices and software that stand apart from the others.

Overall business process value is the key consideration in judging which product is BERTL's Best. BERTL analysts take the role of the end user and ask: "How well does this product work in my real-world business setting?"

BERTL combines its wide-ranging knowledge of the competitive landscape and contact with buyers about their product and supplier experiences to identify worthy products. BERTL analyzes network management utilities, concurrency and contention, print and copy productivity, image quality, return on investment, competitive advantage, accessibility, design and build quality, standard functions, modularity of design and upgrade path, installation, and more.

BERTL is 100 percent independent. It receives no funding from the industry and all product evaluations and reports are published at BERTL's own expense for its subscribers.

BERTL publishes the world's largest library of business competitive intelligence for the digital imaging market at [www.BERTL.com](http://www.BERTL.com).