



## Contents

Introduction .....	5
K \ U h Đ g ` B Y k ` ] b ` J Y.f.g.]...c.b..... " + .....	6
Installing the Software .....	7
Setup and Configuration: Using the Setup Tool .....	9
Selecting a Location/Language .....	10
Selecting a PSV Edition: Features Tab .....	11
Entering a Software License Key: Enterprise Edition Only .....	12
Selecting a Database: Database Tab .....	13
Assigning server memory limits to SQL server: Database Tab .....	15
Database Housekeeping features: Database Tab .....	16
Selecting a Web Server: Web Config Tab .....	17
Configuring an Internal Web Site: Web Config Tab .....	18
Configuring a Public Web Site: Web Config Tab .....	19
Assigning Admin Username and Password: Administrator Tab .....	20
Configuring your E -mail server: Alerts Tab .....	21
Data Synchronization : Data Synch Tab .....	23
Software Registration: Registration Tab .....	25
Check for Security Updates: Security Tab .....	26
Identifying PSV Version Numbers: Program Tab .....	27
Getting Started .....	28
Context Sensitive Help .....	28
User Access.....	28
Adding a User / Assigning Individual User rights .....	29
Importing a List of Users .....	30
Creating User Groups .....	30
Changing Your Password .....	31
Creating / Editing Groups of Devices .....	31
Adding/Removing a Device to/from a Group .....	32
Adding Maps and Floor Plans to a Group .....	35
Discovering De vices .....	38
Configuring Timeouts .....	46
Making Discovery Easier: Importing IP Addresses from a text file .....	46
Discovering Network Devices: Easy Configuration .....	48
My Printers .....	49
Near Me .....	50
Computers with Agents .....	51
Config uring Email Alerts .....	52
Configuring an Email Server .....	55
Testing The Email Alert Configuration .....	57
Configuring Status Events .....	58
Customizing Status Codes .....	60

Processing Alerts /Generating Alert Logs .....	62
Data Collection Interval .....	64
Cloning .....	65
Group Configuration .....	68
Configuring Static IP Addresses .....	69
By Groups that contain required attributes .....	69
By a Group of Devices in a Single Subnet .....	71
By CSV File .....	75
Changing IP addresses without Admin Rights .....	77
Supplies Ordering .....	79
Searching for a supply item .....	80
Items For Local Printers .....	80
Customizing Supplies Orders .....	81
Configuring the Supplies List .....	82
Enabling / Disabling Online Supplies Ordering .....	83
Editing the Supplies List .....	83
Selecting an Alternative Supplies List .....	85
Disabling Supplies Ordering .....	85
Supplies Ordering Calendar .....	87
Reporting .....	88
Available Reports .....	88
Configuring Report Properties .....	88
The Supplies Levels Report .....	90
The Toner Changes Report .....	91
Supplies Usage Report .....	94
Printed Pages Report .....	98
Color/ Mono Pages Report .....	100
Exporting Device Properties and Attributes Report .....	101
Usage Report .....	102
Monthly Printing Report .....	104
Windows Print Job Logs .....	105
Printers Log Report .....	108
Device Job Logs Report .....	110
Adding Device Attribute Data .....	112
Configuring a Print Device Remotely .....	113
Data Synchronization .....	114
Viewing a List of Sending Sites .....	116
Generating Reports from Sending Sites .....	117
Monitoring Locally Connected Devices .....	118
Installing the PSV Agent: Option 1 .....	118
Configuring the PSV Agent .....	119
Installing the PSV Agent Using PSV Director: Option 2 .....	121
PSV Assistant .....	125
Performing Day to Day Tasks .....	128
Viewing Device Status .....	128

Quick Search .....	129
Changing the Device Properties Displayed .....	130
Additional Configuration Settings .....	131
Changing Languages .....	132
Downloading Oki Drivers .....	132
Sending Files / Updating Firmware from PSV .....	134
Creating a Maintenance Log / Managing Supplies Inventory .....	136
Creating a Log -in Log .....	139
Clearing (Deleting) Logs .....	139
Public Web Services .....	140

## *Intr oduction*

PrintSuperVision (referred to as PSV throughout this document ) is a Windows server application designed for managing and monitoring printing and copying devices. The core application is server Ébased and is accessible from any browser enabled device connected to a network. Popular browsers supported include Internet Explorer, Firefox and Opera.

The application is available in two editions: Professional Edition and Enterprise Edition.

The Professional Edition is a subset of the Enterprise edition and shares the same menu structure and many of the same features. Notations will be made throughout this document to indicate differences between the Enterprise and Professional Editions.

The only major feature in the Profession al Edition that does not exist in the Enterprise Edition is the Single -user ÍEasy Configuration Í option. The Single -user option can be installed in a non -server configuration on network-connected laptops and desktops.

The Single -user Easy Configuration option allows users to check status of supply levels, monitor consumable life remaining and collect printed page counts while providing the ability to order supplies on l ine. The easy configuration option is designed for very small offices and does not support the automatic delivery of device Alerts through email.

Some of the common features of both PSV Professional and PSV Enterprise Editions include:

- Discover s and configure s devices
- Helps pinpoint devices on the network
- Assists in remote trouble shooting
- Automatically identifies device status and email s alerts
- Produces reports and automatically deliver s them via email
- On-line supplies and consumable ordering (configurable by region)

## New in Version 3.7

Perhaps the most important enhancement in version 3.7 Enterprise Edition is the ability to monitor Oki devices that are not directly connected to the network, (i.e.) devices that are connected to a computer via a USB interface.

PSV Enterprise Edition now monitors locally connected Oki devices through the use of an agent which can be installed on Windows-based laptops or desktops. The agent can also be pushed down to a computer. For more information on the Agent and Director proceed to the Monitoring Locally Connected Devices section on page 120.

Note: The PSV Professional Edition does not support locally connected device monitoring and therefore does not include the Agent or Director applications.

Several other noteworthy enhancements have been made to both PSV Pro and PSV Enterprise Editions in version 3.7 and include:

- Product License Key now required for Enterprise Edition
- Data Synchronization added to Enterprise Edition: Ability to transfer data from one PSV site to another
- Ability to import and export device information
- Ability to remotely change IP addresses on Oki devices from Dynamic assigned to Static and vice versa
- Ability to identify computers that have the PSV Agent installed
- Ability to view supply status and page counts of the locally connected device
- Ability to view device status and page counts of the locally connected device
- Ability to view device status and page counts of the locally connected device
- Ability to view device status and page counts of the locally connected device
- Improved device import process (from excel or CSV file)
- Added a new device import process (from excel or CSV file)
- Changed default database from MS Access to SQL Compact in PSV Professional edition
- Quick Search Added to both Pro and Enterprise Editions
- Enhanced the file download feature to support remote firmware installation

## Installing the Software

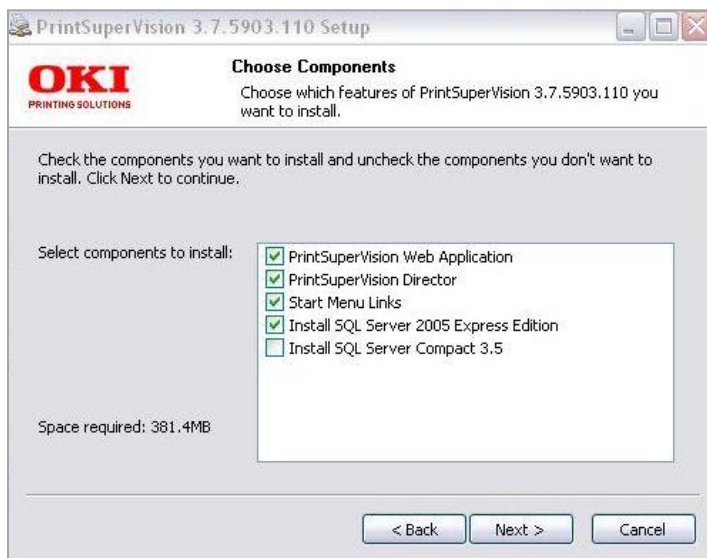
PSV Professional and Enterprise Editions are available from [www.okidata.com](http://www.okidata.com) at <http://www.okidata.com/mkt/html/nf/PrintSuperVision.html>

Both Enterprise and Professional editions downloaded from the web include the PSV Server application. PSV Enterprise also includes the PSV Director application described later. The corresponding PSV Agent application is available as a separate download from the web and operates only with PSV Enterprise.

During installation, PSV checks the target server to see if .NET 2.0 (or above) is installed. If the .NET platform is not detected, PSV will link the user to the Microsoft website to download and install the .NET software. PSV also provides the option to download and install a [Microsoft] SQL database, such as the Express Edition and Compact Edition. Keep in mind that PSV uses Microsoft Access as the default database which is built into the server application. Using SQL databases is optional.

To install PrintSuperVision, locate the executable file that was downloaded from the Oki website, and click on it. A standard licensing agreement is displayed. If you agree with the license agreement, click Next.

Both editions allow you to select the desired components to install. The following dialog box displays the options that can be installed in the Enterprise Edition. Fewer choices are available from the same dialog box when installing the Professional edition.



An application called PSV Director can be installed along with the core server (web) application and other options. PSV Director provides Windows domain administrators the ability to remotely install, upgrade, uninstall, monitor, and configure the PSV Agent (which is a separate download).

The Director can also collect information about printer queues, drivers, and ports on either a single computer or all computers in a domain. PSV Director will be discussed in more detail in the [Monitoring Locally Connected Devices](#) section. Click the PSV Director check box if you wish to install that module.

Note: When PSV Director is installed, you can find it later by clicking [Start /All Programs / PrintSuperVision](#). It is not accessible from the setup wizard discussed in the following section.

You also have the option to install free versions of SQL Express or SQL Compact Editions which will be used later to collect device information and subsequently to run reports.

If you do not install SQL Express or SQL Compact edition you will still be able to use the built-in Microsoft Access database that installs automatically with the PSV server application.

## *Setup and Configuration: Using the Setup Tool*

Immediately following installation, the PSV setup tool (wizard) is launched. Follow the step by step process to configure PrintSuperVision. Keep in mind that many of the configuration options are also available from within the PSV server application so it is not imperative to complete all settings during the setup process.

You may also return to the PSV Setup Tool at any time. It is available from the Windows Start menu by clicking All Programs / PrintSuperVision / PrintSuperVision Setup .

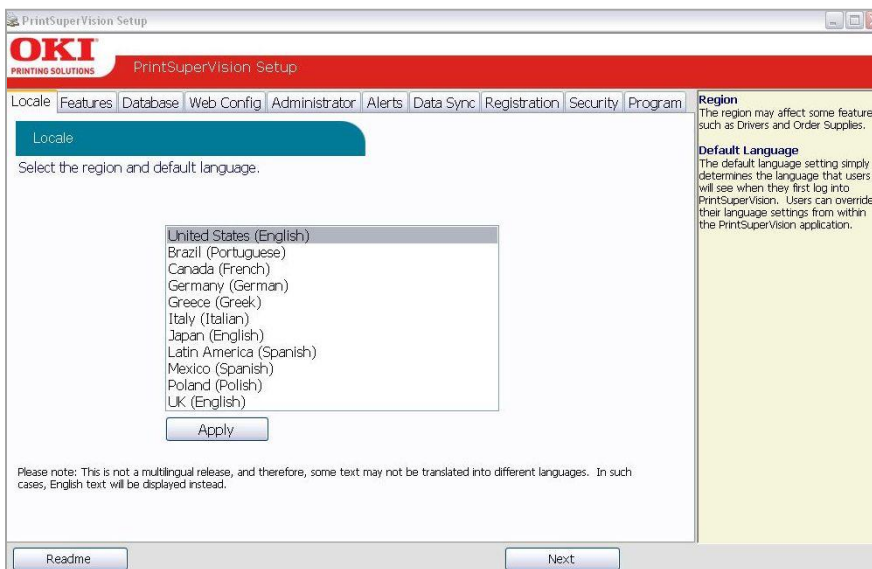
Note: Certain changes using the PSV setup tool can only be made when the web application and PSV Engine services are not running. For example, in order to change the web server Wc a d c b Y b h e n z b e d a d ' I ' h e ' =, the web service application must not be running.

## Selecting a Location / Language

The PSV setup tool launches directly into the Locale tab and displays the Location/ Language selection screen first.

1. Select a default location / language for all users
2. Click Apply and Next

Each user can later change his/her language preference directly from the application. Use caution however when selecting the desired language since it is changed as soon as the **Apply** button is clicked. If you are not familiar with the language selected, it may be difficult to return to your native language.

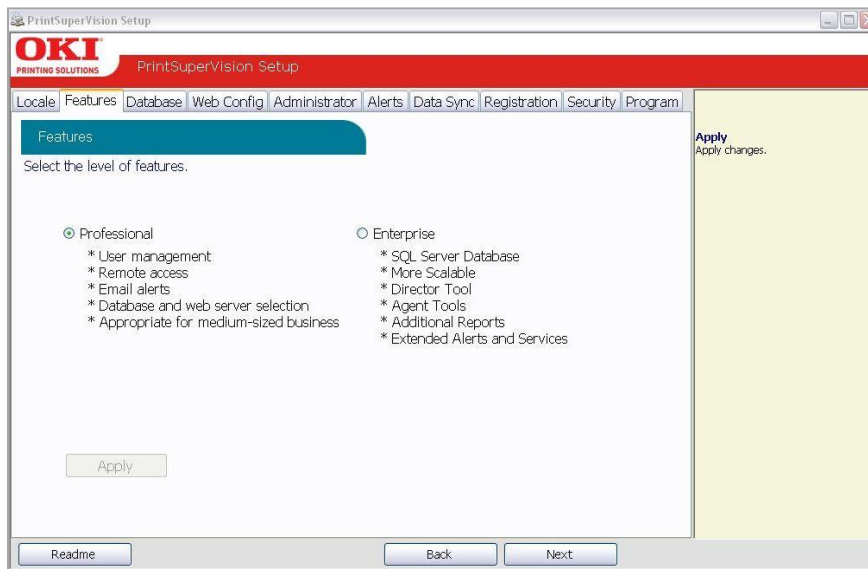


Note: The location/language selected effects enabling or disabling the On-Line ordering feature while selecting any other location disables the ability to order supplies on-line from links that appear within the application.

Selecting a PSV Edition: Features Tab

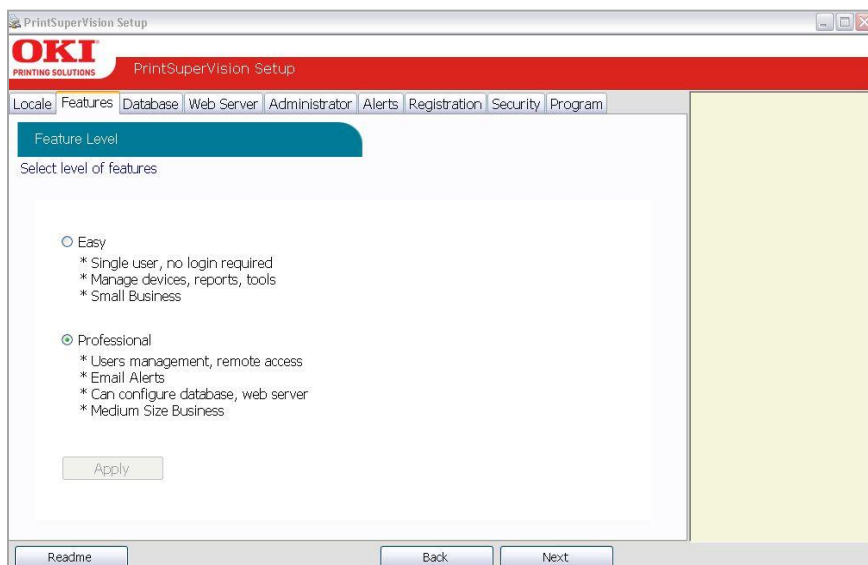
After choosing a language and clicking Next you will be prompted to select the PSV edition that you would like to use.

If you installed the Enterprise Edition you are offered the choice to install either the Enterprise or Pro edition (but not the single-user Easy edition).



Select the desired PSV configuration, Click Apply and Next .

If you installed the Professional edition you have the choice of selecting the Single - user Easy edition or the Professional Edition. Select the appropriate configuration and click Apply and then Next .



Entering a Software License Key: Enterprise Edition Only

If you selected the Enterprise Edition you will be prompted to enter a valid license key that can be requested from Oki Data Customer Support via email at [psvlicensekey@okidata.com](mailto:psvlicensekey@okidata.com) or by calling 800-okidata.

Enter a valid license key and Click OK

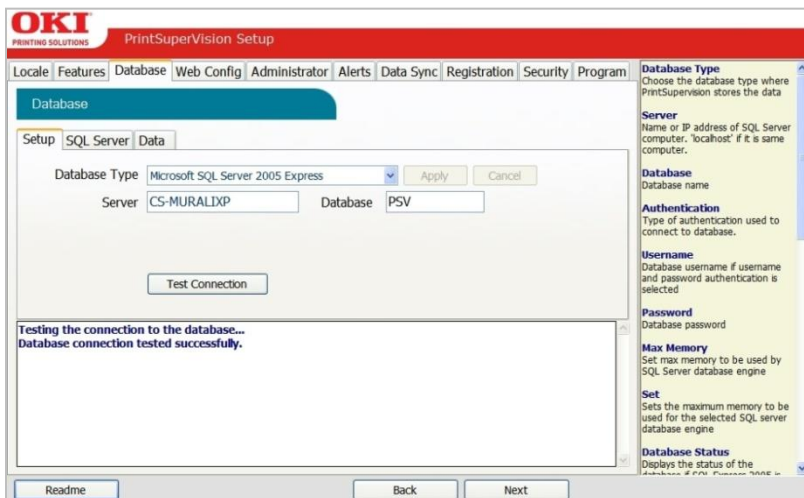


## Selecting a Database : Database Tab

The next step is to select the type of database you would like to use with PrintSupervision. As mentioned previously, both editions of PrintSuperVision utilize a built -in Microsoft Access database, but you may choose other options as well.

If you do not wish to use the built -in Access database, PSV allows you to select SQL Compact Edition 3.5 (in the Pro edition) as well as SQL Server 2005 Express in the Enterprise edition. Both versions of SQL were provided as optional choices when installing PSV Enterprise.

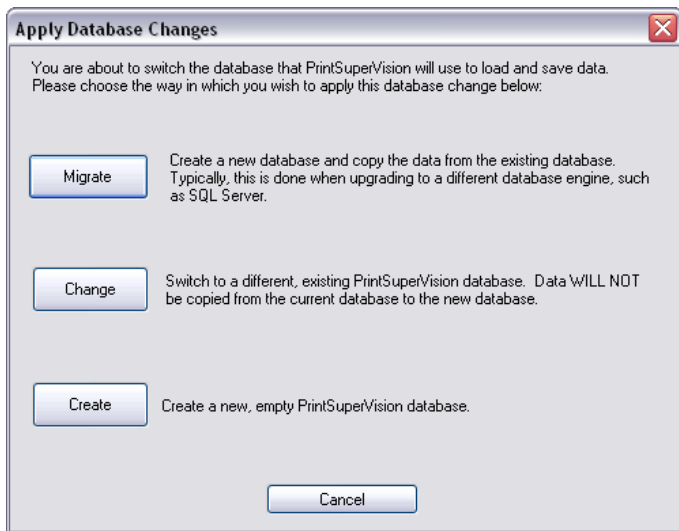
While in the Database tab, Click the Setup tab and select the desired database from the dropdown menu.



Note : The Screen shot shown above is from PSV Enterprise. PSV Professional does not provide the option to enter a name for the server or database.

Also note that the SQL Server Tab is dynamic and will only appear if you have a full version or express version of SQL server installed on the server/computer.

Click Apply , and the following options are presented:



Please note that even if you already have a compatible database such as SQL Compact Edition installed on your server, you still must complete the following steps to [ W f Y U h Y Î ' ] h ' know where to save data.

Click one of the following options:

- Migrate : Migrates your current database to a new one
- Change : Switches to an existing database
- Create : Creates a new database

For new PSV Installations click Create which creates a new (empty) database.

To switch to an existing database without saving any previous data click Change .

To create a new database and copy existing data to the new database click Migrate .

Click Start to process the database selection and click OK when the operation is complete.

Notice in the Enterprise Edition (not available in Pro) that you may also test the connection to the server and enter a new name for the server if you selected SQL Server 2005 Express or another SQL database such as SQL 2000, 2005 , or MSDE that have already been installed on the server.

## Assigning server memory limits to SQL server: Database Tab

If the server you are installing PSV on already has a full version (or express version) of SQL installed, the SQL Server tab will appear in the Database section.



This tab allows you to assign a maximum amount of memory that SQL can use

U b X ' a U m ' d f Y j Y b h ' G E @ ' Z f c a ' Wc b g i a ] b [ ' U ' g ] [ b ] Z ] WU b

To check the amount of memory (RAM) that SQL is currently using click the **Get** button. A numeric value will be displayed. To allocate a larger or smaller amount of RAM to the database application, type in an amount (in megabytes) in the **Max Memory** field and click the **Set** button.

You may also click the **Properties** button to see the accumulated size of your database files.

Note: The SQL Server tab is not available in the PSV Pro edition

























































































































































































































































