

# OKI Printing Solutions Print Drivers & Citrix Presentation Server 4.0 Compatibility Report

5/29/2006

This document presents results from compatibility testing between OKI Printing Solutions print drivers and Citrix Presentation Server 4.0. All testing was performed with English versions of Presentation Server 4.0, all Microsoft operating systems and OKI Printing Solutions drivers.

## 1. Evaluation Environment

Server and Client OS used in this evaluation:

|                     |  |
|---------------------|--|
| Windows Server 2003 | Windows Server 2003 Standard Edition<br>+ MetaFrame Presentation Server 4.0<br>+ HotFix applied (PSE400W2K3R01: Last Updated on 1/16/2006) |
| Windows 2000 Server | Performed quick test only  |
| Client: WinXP       | ICA9.00.32649 ( WinXP )  |

OKI Printing Solutions printer models tested:

| Model                                  | Firmware version  | Driver version  | Connection / Interface                 |
|--|---|---|--|
| <b>ES1624 MFP</b>                      | CU:V1.36 , PU:01.03.01<br>RAM:64MB<br>NIC:OkilAN8100e 02.76 | PS: v 5.2(5.2.3790.0)<br>PPD Ver1.1<br>PCL: v1.1.1  | OKI LPR<br>MS-TCP/IP<br>USB, Parrallel |
| <b>C5510 MFP</b>                       | CU:H2.12, PU:01.03.01<br>RAM:96MB<br>NIC:OkilAN5510e        | Hiper-C: v2.0.0   | OKI LPR<br>MS-TCP/IP<br>USB            |
| <b>C6100 Americas<br/>C5900 Europe</b> | CU:D1.08, PU:00.00.60<br>RAM:128MB<br>NIC:OkilAN8300e 04.50 | PS: v1.0.2.0<br>PCL: v1.0.1<br>XL : v060119   | OKI LPR<br>MS-TCP/IP<br>USB            |
| <b>C5800L</b>                          | CU:C1.03, PU:00.00.55<br>RAM:32MB<br>NIC:OkilAN8300e 04.01  | Hiper-C: v1.0.2   | OKI LPR<br>MS-TCP/IP<br>USB            |
| <b>C3400</b>                           | CU:B1.01, PU:00.00.37<br>RAM:32MB<br>NIC:OkilAN9100e 05.01  | Hiper-C: v1.0.0   | OKI LPR<br>MS-TCP/IP<br>USB            |
| <b>B4350</b>                           | CU:M0.75, PU:00.00.82<br>RAM:64MB<br>NIC:OkilAN8150e t2.92  | PS: v1.0Edt2<br>PCL: v1.2.1   | OKI LPR<br>MS-TCP/IP<br>USB, Parallel  |
| <b>C9600</b>                           | CU:01.40,PU:00.00.97<br>RAM:640MB<br>NIC:OkilAN8200e 03.B7  | PS: PPD1.7 6/6/05 Web version<br>PCL: v1.2.0 4/11/06<br>XL: FC3 1.3.5.3/4.98.9.47 4/29/05 | OKI LPR<br>MS-TCP/IP<br>USB, Parallel  |
| <b>C9800</b>                           | CU:rohs.024_RDP<br>PU:00.00.97<br>RAM:1024MB                | PS: v1.6.40.1 2/20/06<br>PCL: v1.2.0 4/11/06<br>XL: FC3 1.3.5.3/4.98.9.47 4/29/05         | OKI LPR<br>MS-TCP/IP<br>USB, Parallel  |

## 2.0 Summary of Evaluation Results:

Same result as MetaFrame Presentation Server 3.0: No problems

No server OS (Windows 2003 Server / Windows 2000 Server) environment-dependent differences observed, no problems.

### 2.1 GUI function test (by running overall quick operation test)

Network printer ⇒ OK

Client printer ⇒ OK

### 2.2 Multiple user print

#### 2.2.1 Multi-user test (by logging in from three separate PCs)

Verified that the printer had printed all user requests without any problems.

#### 2.2.2 Load test

Three users opened large-load TP and printed simultaneously. => OK

In some cases, the server's CPU load rate reached 100% momentarily.  
Viewed from the clients, the response slows down but it does not affect printing.

### 2.3 Saving Printer Settings

#### 2.3.1 Inheriting the Properties settings when connecting for the first time

Client printer: (Auto Create Printer)

- Device options are not inherited.
- Other settings are partially inherited. (Paper size, Copies, Resolution)

Network printer: (printer directly connected to the server)

- Device options are inherited.
- Other settings are not inherited. Driver's default values become effective for all.

#### 2.3.2 Retaining previous printer settings when reconnected:

For a client printer, they are retained.

For a network printer, they are retained.

### 2.4 Universal Printer Driver (HP CLJ4500) Operation Check Results

Verified that with each driver, universal printer driver (UPD) is automatically created correctly.

#### Additional Notes:

- Confirmed that color printers could print in color
- Confirmed that there was no problem when printing text and images
- There's a tendency for print data to increase when going through UPD (raster conversion), thus, there is a tendency to take time before print result is ejected.

When using the Universal Print Driver it is unknown whether correct print data is generated without failure because raster conversion is involved. Therefore, we recommend that a native (Oki) driver be used.

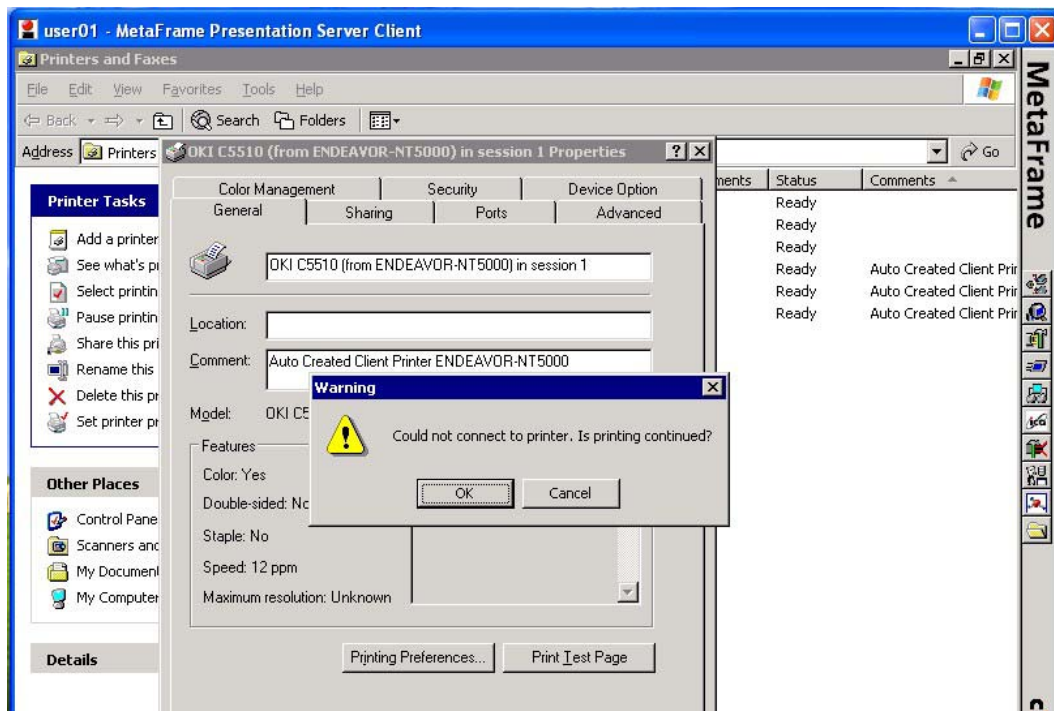
## 2.5 Cautions when using C5510MFP, C5800L and C3400

When used as client printers:

- With C5510 MFP, C5800L and C3400 connected via LPR and USB, a warning is displayed immediately after PRINT button is clicked.

When they are used as network printers, no problems were observed

Therefore Oki recommends that these printers be used as network printers.



## 2.6 Cautions When Using C3400 Status Monitor

This section describes specification restrictions when using the C3400 status monitor

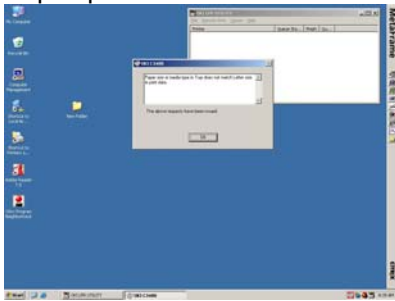
### 2.6.1 Launching the Status Monitor

Normally when printing is executed, the Status Monitor icon is displayed in the task tray and launched, but when using the status monitor in a Presentation Server environment, the Status Monitor needs to be launched manually at login.

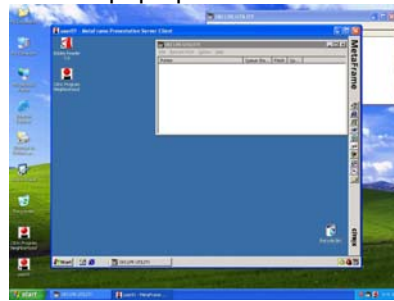
### 2.6.2 Pop-up Display

When a printer alarm occurs when printing with USB connection, the status (Paper size error, etc) only pops up on the server screen:

Pops up on the server screen.

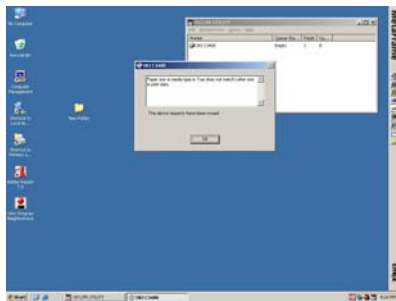


Does not pop up on the client screen.

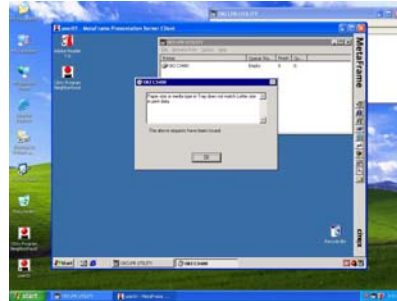


When a printer alarm occurs when printing with OKI LPR connection, the status (Paper size error, etc) pops up on both the server and client screens.

Server screen



Client screen



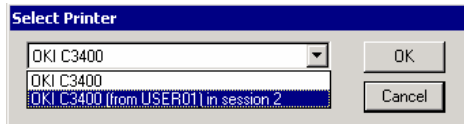
Enlarged pop-up display



### 2.6.3 Selecting client printer

When launching Presentation Server, “Select Printer” dialog is displayed to prompt a user to select a printer, but if client printer is selected, Printer connection error results, and cannot be used.

SelectPrinter dialog



Printer connection error



## 3. 0 Restrictions

The following restrictions apply to Oki drivers and Presentation Server 4.0

1. The C5510MFP, C5800L and C3400 printer cannot be used as a client printer (that is displayed in the Printers folder of the client computer).
2. Client printers that are automatically created: At the time of auto creation, client printer settings are not inherited, except for some items. You need to set items such as options, after auto creation.

The following items in the client settings are inherited in auto creation:

- Paper size (excluding user defined size and custom size)
- Resolution or print quality
- Print orientation: portrait and landscape
- Copies, Scale

The settings of a printer that was once created automatically are restored when the printer is reconnected.

In MetaFrame XP Feature Release 2 and later, if the item “Update printer properties at each logon” is set to ON in printer management properties of Citrix management console, the above items are updated according to the client side settings. Other items retain the state of the previous login.

### 3. ES1624 MFP, C6100, and C9600 PostScript drivers

When printing from a client, you cannot use “Request Job Name for each print job” in the Proof / Secure Printing settings. The Dialog to enter the job name is not displayed on the client window, but displayed on the server console.

Counter Measure to avoid this problem: Uncheck “Request Job Name for each print job” before using the printer.